

Norwich Heritage Trust is a nonprofit Corporation formed to promote preservation and awareness of the city's heritage - architecture, streetscapes and neighborhoods - through education, design, planning and rehabilitation.

Norwich Heritage Trust



PO Box 185 Norwich, Connecticut

April 2003

Annual Meeting
May 7, 2003 7:00 p.m.
Sandy Quarto's
24 Broad St., Norwich



Lieutenant, Commanding Ezra Seals, U.S.N.

will present an informative talk on his exploits, thus far, in the War of the Rebellion. Lieutenant Seals is the former captain of the U.S.S. Brewster a 10 gun steamboat that participated in the Invasion of North Carolina. His ship was responsible for the capture of numerous enemy forces, the destruction of several Rebel forts, and the recapture of several important towns.

Lieutenant Seals was a member of the first four year class of the U.S. Naval Academy and sailed with Commodore Perry on his historic trip to Japan.

In his words "We were given an impossible task: to stop the ironclad C.S.S. Virginia from attacking our warships. Our encounter with her was brief and very unfortunate." Come hear the latest developments in the war first hand from our gallant Norwich native.

NHT members are invited and encouraged to bring guests. Refreshments will be served after Seal's talk. For more information call Bill Champagne at 889-0303 or Geoff McLean at 886-8599.



NHT SUPPORTS THE MAIN STREET PROGRAM

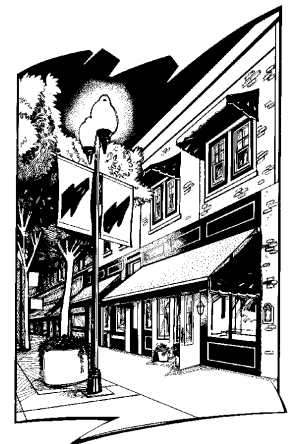
The Main Street Program has been instrumental in managing downtown revitalization efforts in over 1,600 communities across the country. It is an economic development program within the context of historic preservation.

A Main Street office in Downtown Norwich will consist of a full-time manager and secretary, at a cost of \$100,000 per year. This office will coordinate all of the agencies, commissions and individuals already working for a better downtown. The result should be a more focused effort toward creating the Downtown that Norwich deserves. The office will be a private, non-profit 501c3 (contributions will be tax deductible), organization run by a Board of Directors. There will be 4 committees working on distinct aspects of the revitalization effort: Design, Promotion, Organization, and Economic Restructuring.

The Main Street Planning Group, spearheaded by NHT Board member Bill Champagne, has been working toward submitting an application to the Connecticut Main Street Center since last summer. The application, due

May 9, must show that there is wide spread community support for the program in the form of letters of support and financial pledges. To date, many individuals, corporations, institutions, and organizations (including NHT) have written wonderful letters of support. Likewise, financial pledges have been received from throughout the community, and the Norwich City Council recently approved a \$25,000 commitment.

There are many ways to help make the Main Street Program a success in Downtown Norwich: write letters of support; make a financial pledge; ask about serving on the Board of Directors or a committee. Please contact Bill Champagne at 889-0303 with any questions.



N.H.T. Brings the Past into the Future

In 1985, Norwich Heritage Trust conducted a survey of National Historic register Homes commissioned by the Connecticut Historical Commission for the city of Norwich. These records of approximately 500 homes are currently on 2000 sheets of paper almost 20 years old. Currently, these publicly held records are torn and discolored.

In order to maintain this valuable information and make it available to many, N.H.T. is proposing to preserve it electronically.

Imagine logging on to the N.H.T. website and linking to a search engine that will show you anyone of these homes, and all of the information available on that home. A homebuyer or new homeowner would learn about the home and it's place in the neighborhood and history. Genealogist would find the homes of their predecessors. Students might research a certain architect's work. A map of Norwich would be visible. Zoom onto a street and touch an icon to learn about that particular house on the street.

The search form for the site would allow a search by a variety of ways; address, architect, or owner. Envision a citywide detailed, digitalized map with building icons which, when a mouse is placed on top would reveal the street number and be selectable to bring up data and a full scale picture of the house.

For approximately \$4,000 for each of the neighborhoods of Downtown, Greenville, Jail Hill and Laurel Hill a new picture of each home and the surveys of that neighborhood could be placed on-line. N.H.T. is currently applying for

grants and looking at sponsorships.

While the primary purpose of this project is to preserve historical documents and make them available to the general public, a significant number of secondary uses can be made of the data. For instance, real estate offices could easily find background information on historic homes. Courier services could have a picture available online to provide to their delivery personnel. City planning and zoning or historians would have ready access to information on homes and their surrounding area. Genealogists could conduct name and place searches documenting ancestor migrations within Norwich. The influence of architectural styles could be analyzed.

This project would benefit the people of the city of Norwich tremendously. As these historic homes are falling into disrepair or being purchased for other purposes, the need to be able to disseminate this information is paramount as Norwich becomes revitalized.

By making these records available online via the World Wide Web, they will be virtually indestructible and available indefinitely. The leading edge application would be the envy of communities around the world and display Norwich's rich, historic past in a way never seen before.



Renew Today!

Mail to Norwich Heritage Trust, Box 185, Norwich, CT 06360

Membership Application

Annual Dues: June 1, 2003 - May 31, 2004

Enclosed is my membership check payable to Norwich Heritage Trust for

\$10 Student/Senior Citizen

\$30 Business

\$15 Individual

\$50 Patron

\$20 Family

\$250 Life

Name _____

Street _____ Telephone _____

City, State, Zip _____